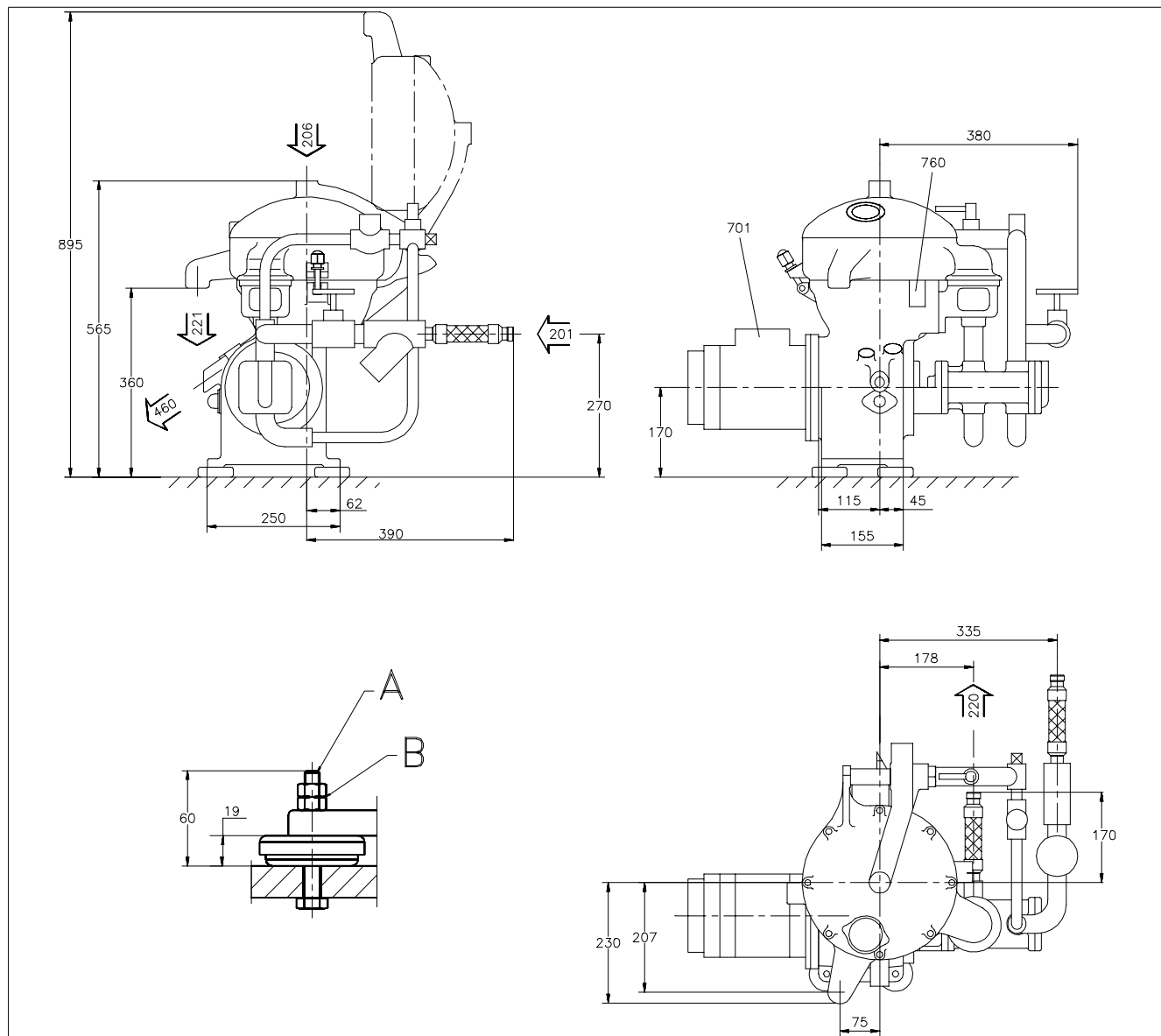


## 8.2 Basic size drawing

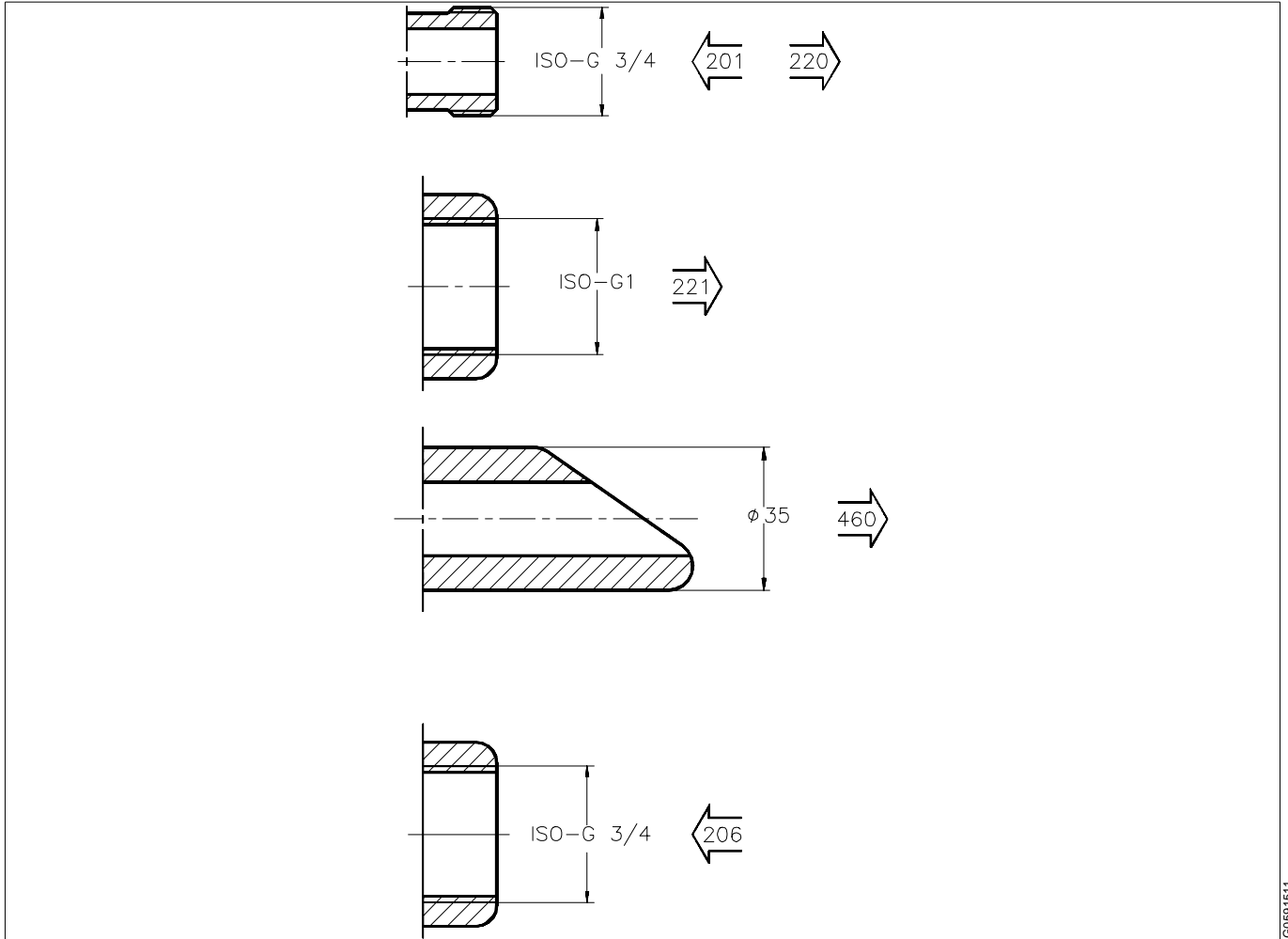
Alfa Laval ref. 556939 rev. 0



- A. Screw 3/8-16UNC
- B. Tightening torque 16 Nm locked with lock nut

Data for connections see "8.3 Connection list" on page 124.

## 8.2.1 Dimensions of connections



*Data for connections, see chapter "8.3 Connection list" on page 124.*

*All connections to be installed non-loaded and flexible.*

## 8.3 Connection list

Alfa Laval ref. 556989 rev. 0

Connection No.	Description	Requirements/limit
201	Inlet for process liquid, (to pump) - Permitted temperatures	max. 100 °C, min. 0 °C
206	Inlet for water seal	Fresh water, approx 1 litre (depending on gravity disc)
220	Outlet for light phase (oil from pump)	
221	Outlet for heavy phase (water)	no counter pressure
460	Drain of frame	
701	Motor for separator - Max. deviation from nominal frequency	±5%
760	Cover interlocking switch (delivered as option)  Type: Double, two-way microswitch  Switch rating: Voltage  Current	Max. 500 V  Max. 3 A